

CLAROFLEX® PIVOT CONFIGURATIONS



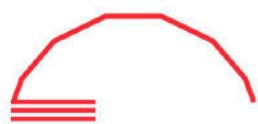
TWO SIDES OPENING:
Both right and left.



OUTSIDE OPENING:
Top and bottom locks can be installed inside or outside.



FIXED FRAMELESS DOOR WITH FLOOR SPRING:
The rest of the panels are stacked on the other side.



SYSTEM WITH DIFFERENT CORNERS:
All the panels move through the corners and are stacked on one side.



ONE SIDE OPENING:
Left or right. The maximum number of panels that can be stacked on a single side is 18.



SYSTEM WITH 90° CORNERS:
All the panels move through the corners and are stacked on one side.



SYSTEM WITH CORNERS LARGER THAN 90°:
All the panels move through the corners and are stacked on one side.



FIXED DOOR WITH FLOOR SPRING AND TOP FRAME:
The rest of the panels are stacked on the other side.



Fenestram Corporation

69A Kundiman Street, Brgy. Paltok,
San Francisco Del Monte, Quezon City
Philippines 1105

marketing@fenestramcorp.com.ph
www.fenestramcorp.com.ph

0917-182-uPVC
(8 7 8 2)

 CLAROFLEX®

 **Fenestram**
CORPORATION



Like Us!

 CLAROFLEX®

info@claroflex.com · www.claroflex.com

OPEN TO THE WORLD

WWW.CLAROFLEX.COM

CLAROFLEX® PIVOT GLAZING SYSTEM ADVANTAGES

The system is a continuous, almost imperceptible, glass surface. The absence of vertical frames creates an effect of clear panoramic view.

The system is manufactured in Europe and has passed all the necessary tests and certifications.

The system transmits the weight to the floor providing enhanced stability and safety as the glass panels are not suspended from the top track unlike other systems.

According to the results of tests in independent laboratories, CLAROFLEX® PIVOT is the most air-tight and waterproof system on the market.

The system operates on the principle of sliding: the panels glide smoothly over a special sliding surface. The system does not need bearings or rollers, so maintenance is almost inexistent.

With our Sliding Door, you can turn a panel into a secondary door, providing an independent access anywhere in the system, without the need to use the ends's doors.

Inside or outside opening configuration from both sides is possible, depending on your needs. You can also select the end where the panels will be stacked.

The system can be easily levelled to compensate the unevenness of the construction. Just by using the top and bottom levelling tracks, you will have 68 mm of regulation.



SYSTEM WITH ALL PANELS IN CLOSED POSITION



SYSTEM WITH ALL PANELS IN OPEN POSITION



SYSTEM WITH ALL PANELS IN CLOSED POSITION

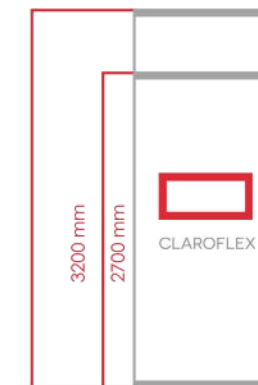


SYSTEM WITH ALL PANELS IN CLOSED POSITION



SYSTEM WITH ALL PANELS IN OPEN POSITION

CLAROFLEX® PIVOT SYSTEM FEATURES

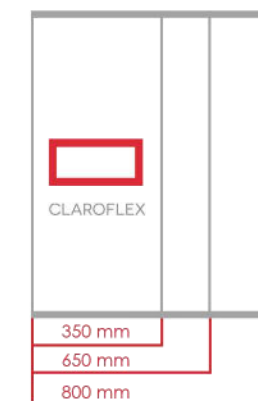


SYSTEM HEIGHT:

Maximum system height with 8 mm glass is 2700 mm.

Maximum system height with 10 mm glass is 3200 mm.

Maximum system height with 12 mm glass is 3200 mm.

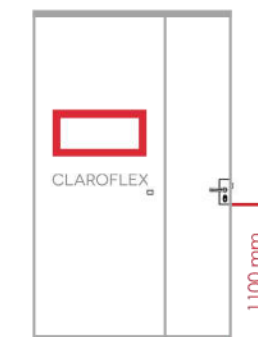


PANEL WIDTH:

Recommended width: 650 mm.

Maximum panel width: 800 mm.

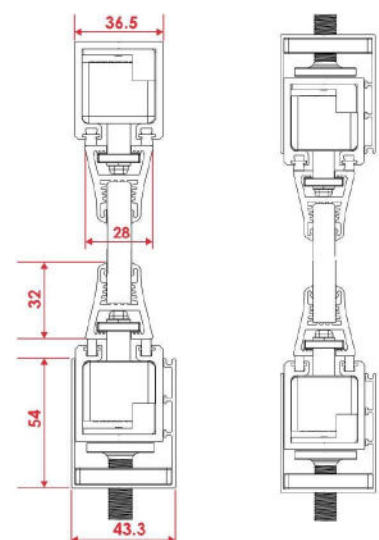
Minimum panel width: 350 mm.



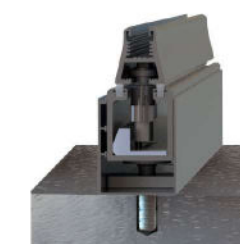
INSTALLATION OF DOOR COMPONENTS:

Locks are usually set at 1100 mm from the floor.

STANDARD SYSTEM WITH BOTTOM LEVELLING TRACK

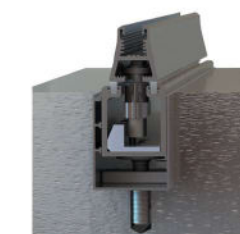


SYSTEM FLOOR FINISHES



SYSTEM INSTALLED OVER THE FLOOR

The ensemble of both the levelling profile and bottom track is only 54 mm high and it is installed over the finished floor.



RECESSED SYSTEM

The ensemble of both the levelling profile and bottom track is only 54 mm high and it is embedded in the floor, previously adapted for this purpose.

CLAROFLEX® SCREEN

Our fly-screen is a pleated net that is placed in the exterior of the glazing. It is composed of aluminium profiles and a mechanically folded polyamide net which spreads out when the strings are tightened.

According to the chosen configuration, side or central opening, CLAROFLEX® Screen can either be spread out to a certain number of panels or throughout the entire opening.



FULLY OPEN FLY-SCREEN WITH CENTRAL OPENING



FULLY CLOSED FLY-SCREEN WITH CENTRAL OPENING

TECHNICAL SPECIFICATIONS:

Maximum wind load: 37.5 kg.
Wind load resistance class: 3.

MAXIMUM CONSTRUCTION DIMENSIONS:

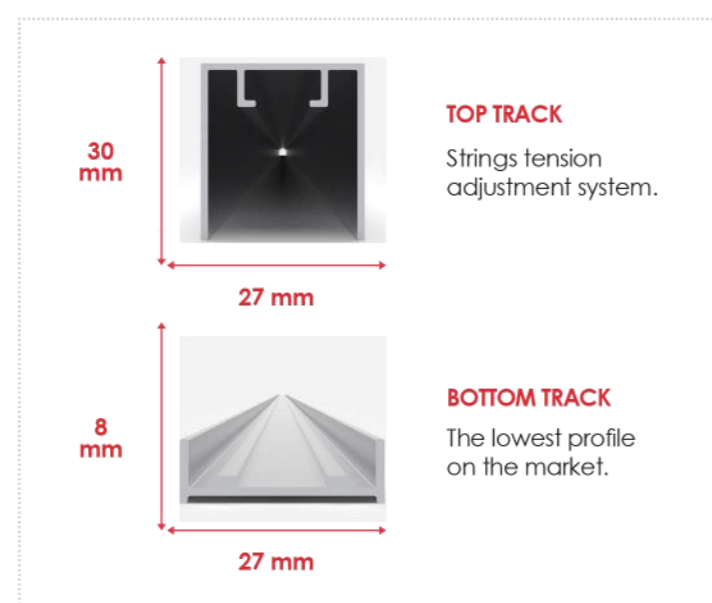
Maximum height: 3000 mm.

Maximum width:
up to 4000 mm with side opening,
up to 8000 mm with central opening.

Maximum net surface: 10 m².

PLEATED NET FEATURES:

Net material: high strength polypropylene.
Strings material: kevlar.
Protection class: protects against all types of insects.



Fenestram Corporation

69A Kundiman Street, Brgy. Paltok,
San Francisco Del Monte, Quezon City
Philippines 1105
marketing@fenestramcorp.com.ph
www.fenestramcorp.com.ph

0917-182-uPVC
(8 7 8 2)

CLAROFLEX®

info@claroflex.com · www.claroflex.com

CLAROFLEX®

Fenestram
CORPORATION



Like Us!

OPEN TO THE WORLD

WWW.CLAROFLEX.COM

CLAROFLEX® PIVOT GLAZING SYSTEM ADVANTAGES

The system is a continuous, almost imperceptible, glass surface. The absence of vertical frames creates an effect of clear panoramic view.

The system is manufactured in Europe and has passed all the necessary tests and certifications.

The system transmits the weight to the floor providing enhanced stability and safety as the glass panels are not suspended from the top track unlike other systems.

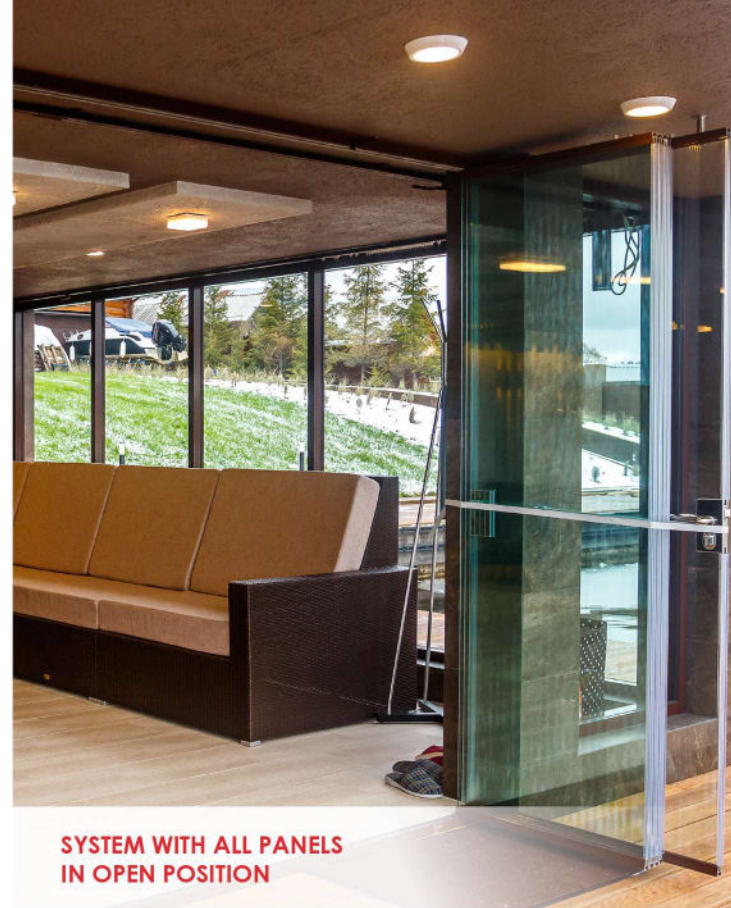
According to the results of tests in independent laboratories, CLAROFLEX® Pivot is the most air-tight and waterproof system on the market.

The system operates on the principle of sliding: the panels glide smoothly over a special sliding surface. The system does not need bearings or rollers, so maintenance is almost inexistent.

With our Sliding Door, you can turn a panel into a secondary door, providing an independent access anywhere in the system, without the need to use the ends's doors.

Inside or outside opening configuration from both sides is possible, depending on your needs. You can also select the end where the panels will be stacked.

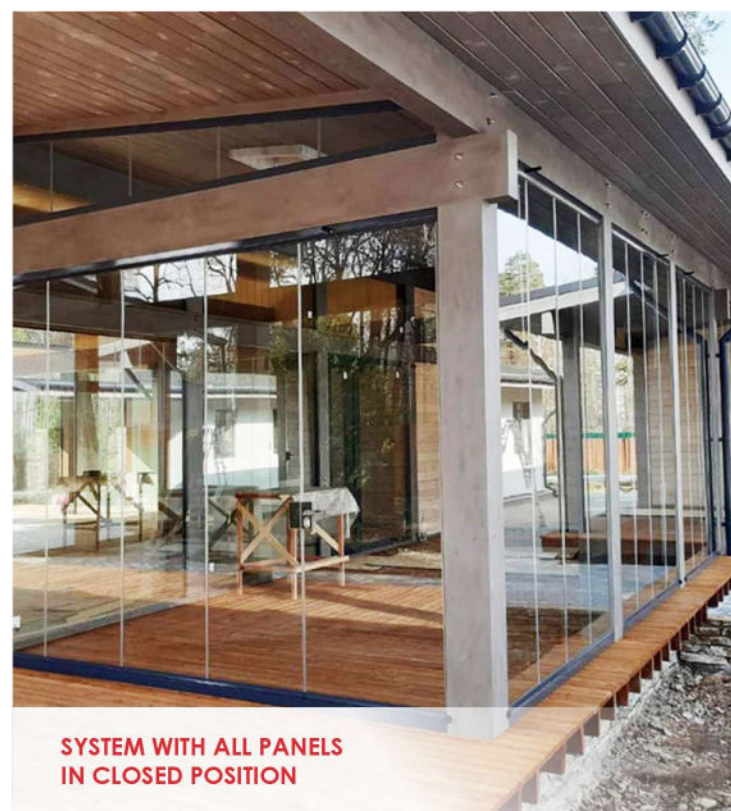
The system can be easily levelled to compensate the unevenness of the construction. Just by using the top and bottom levelling tracks, you will have 68 mm of regulation.



SYSTEM WITH ALL PANELS IN OPEN POSITION



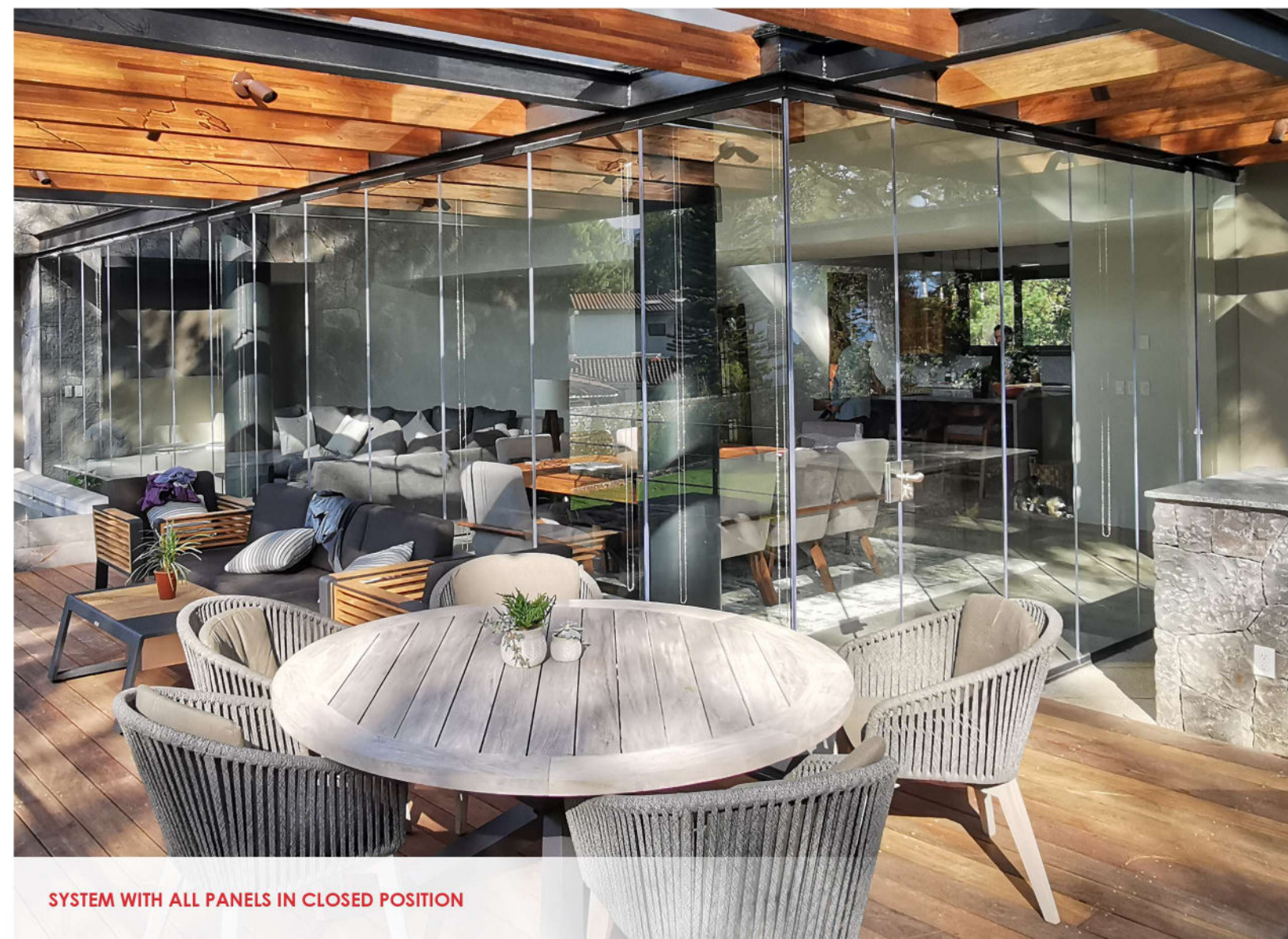
SYSTEM WITH ALL PANELS IN CLOSED POSITION



SYSTEM WITH ALL PANELS IN CLOSED POSITION

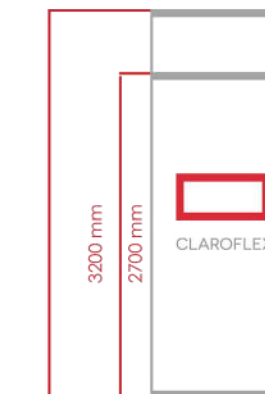


SYSTEM WITH ALL PANELS IN OPEN POSITION



SYSTEM WITH ALL PANELS IN CLOSED POSITION

CLAROFLEX® PIVOT SYSTEM FEATURES

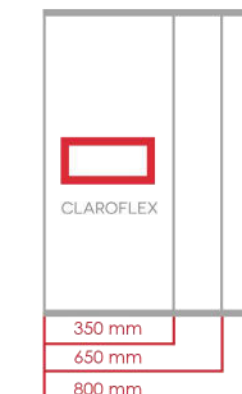


SYSTEM HEIGHT:

Maximum system height with 8 mm glass is 2700 mm.

Maximum system height with 10 mm glass is 3200 mm.

Maximum system height with 12 mm glass is 3200 mm.

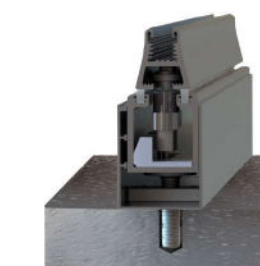


PANEL WIDTH:

Recommended width: 650 mm.

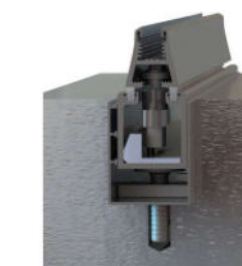
Maximum panel width: 800 mm.

Minimum panel width: 350 mm.



SYSTEM INSTALLED OVER THE FLOOR

The ensemble of both the levelling profile and bottom track is only 54 mm high and it is installed over the finished floor. This configuration is perfect for balconies and openings where passage is not very frequent.



RECESSED SYSTEM

The ensemble of both the levelling profile and bottom track is only 54 mm high and it is embedded in the floor, previously adapted for this purpose. This configuration is perfect for openings with very frequent passage.

CLAROFLEX® PIVOT CONFIGURATIONS



TWO SIDES OPENING:

both right and left.



ONE SIDE OPENING:

Left or right. The maximum number of panels that can be stacked on a single side is 18.



OUTSIDE OPENING:

Top and bottom locks can be installed inside or outside.



SYSTEM WITH 90° CORNERS:

All the panels move through the corners and are stacked on one side.



FIXED FRAMELESS DOOR WITH FLOOR SPRING:

The rest of the panels are stacked in the other side.



SYSTEM WITH CORNERS LARGER THAN 90°:

All the panels move through the corners and are stacked on one side.



SYSTEM WITH DIFFERENT CORNERS:

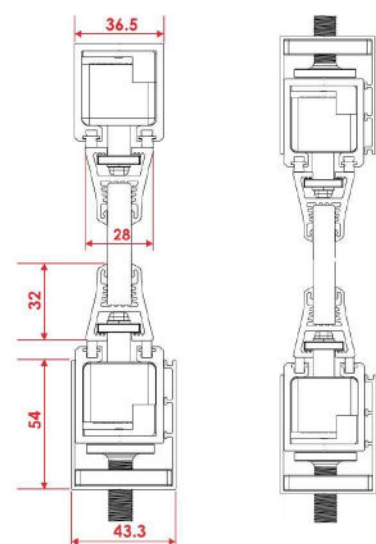
All the panels move through the corners and are stacked on one side.



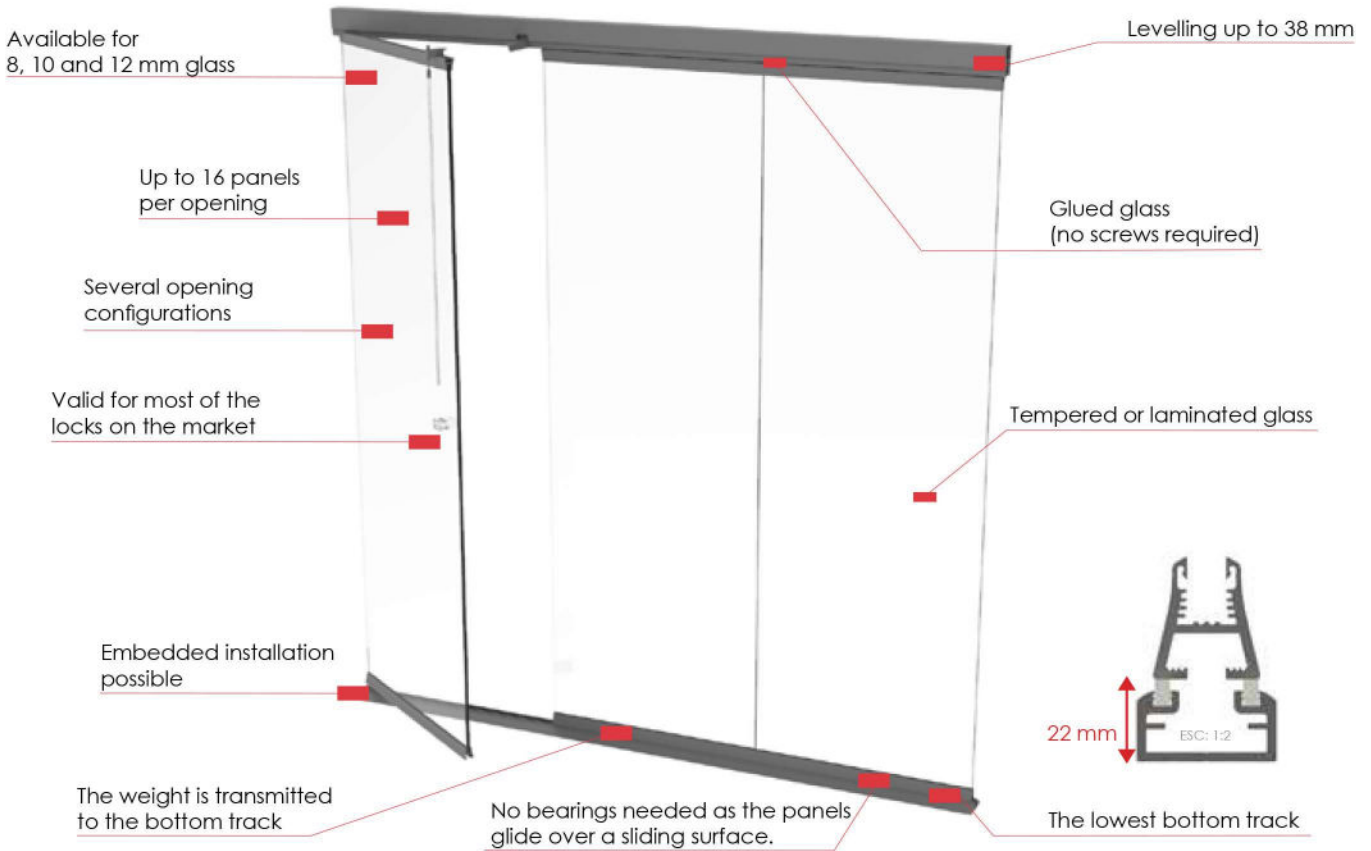
FIXED DOOR WITH FLOOR SPRING AND TOP FRAME:

The rest of the panels are stacked in the other side.

STANDARD SYSTEM WITH BOTTOM LEVELLING TRACK



The frameless retractable glazing system with the lowest track



Bottom weighted system

Maximum security. Valid for any type of structure.



No wheels or bearings

Maximum reliability. Smooth and silent functioning over the sliding tracks.



Ideal for indoor installations

CLAROFLEX®PIVOTmini is perfect for indoor installations although it can also be used outdoors.



Three options available

Full length bars, precut and mechanized projects or already glazed systems.



Minimal maintenance

No need for annual high cost maintenance.



Fixing screws for glass not needed

Higher reliability and lower cost because there is no need for special screws or drills in the glass.



CLAROFLEX ERP® for customers

A whole solution for our product: project design, quotations, orders and stock management.



Warranty

All CLAROFLEX® products have 5 years warranty.

The **frameless glazing system CLAROFLEX®PIVOTmini** is the only one on the market specifically designed for indoor spaces, although it can be also installed outdoors.

The maintenance is minimal, due to its conception and the use of high quality materials. This allows a better reliability.

Features

- **Operation without bearings:** The panels move over a special sliding surface.
- **Opening options:** Inside or outside opening from both sides is possible, depending on your needs. Top and bottom door locks. Air circulation position.
- **Colours:** Anodized, powder coating or wood-like finishes.
- **Glass:** Laminated or tempered glass. 8, 10 or 12 mm.
- **Corners:** Panels can pass through corners between 90° and 270°.
- **High resistant components.** As per the saline mist tests ISO 9227, ASTM B117 and DIN 50021. More than 750 hours in the test chambers.
- **Components.** Made of different kinds of plastics and metal alloys: stainless steel, aluminium, zamak.

Technical features

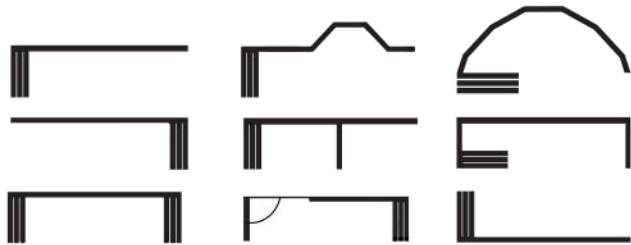
- **Sound insulation:** 34 dB.
- **Thermal transmittance:** 5.6 W/m²K.
- **UNE 12600 (2003) test:** 1C1

* Data for 10 mm tempered glass

Max. dimensions

- **Panel width:** 800 mm.
- **Door width:** 1000 mm.
- **Maximum height:** 3150 mm.
- **Maximum number of panels per opening.** 16*.
* Consult our team for more panels.

Configurations



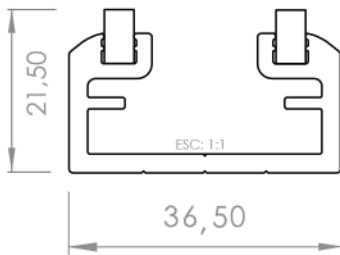
Options



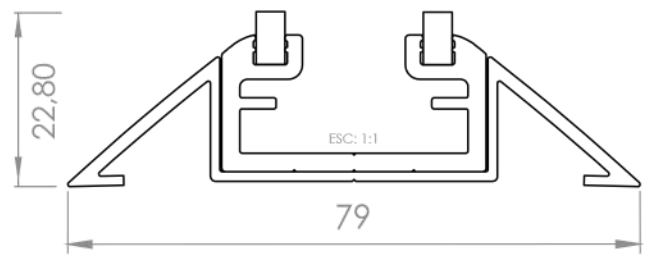
CLAROFLEX® ARMLESS

System drawings

Standard system



System with floor trim



Manufacturing & installing advantages

SIMPLE MANUFACTURING

Extremely easy processes.
No need for special training.

EASY TO INSTAL

Components designed
to optimize time on site.

TIME SAVING

Manufacturing up to a
50% faster. Installation
in half of the time.

**ZERO
MAINTENANCE**

No need for annual
maintenance.

CLAROFLEX®
Distribuidora de Sistemas de Cierre, S.L.
Nicolás Redondo, 1. P. I. El Cerro de Cártama
29570 Cártama, Málaga. SPAIN.
Tel: +34 952 427 141
e-mail: info@claroflex.com

www.claroflex.com



Like Us!

Fenestram Corporation

69A Kundiman Street, Brgy. Paltok,
San Francisco Del Monte, Quezon City
Philippines 1105
marketing@fenestramcorp.com.ph
www.fenestramcorp.com.ph

0917-182-uPVC
(8 7 8 2)